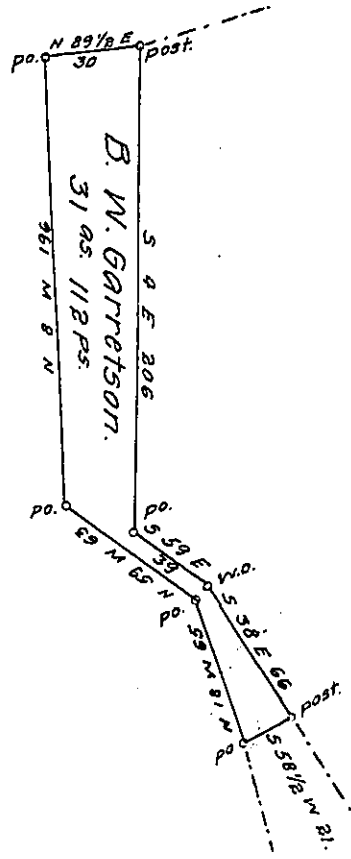


Andrew Berzzard & Jacob Devore.



Abraham Kerns in right of
Geo. Smith.

Cornelius Devore.

Situate in Londonderry township Bedford County, containing
31 acres 112 perches, and the usual of allowance of six per
cent for roads. Surveyed the 10th. day of Dec. A. D. 1868. In pursu-
ance of a warrant, granted to Benjamin W. Garretson dated
the 4th. of Dec. A. D. 1868 for 30^{acs}.

Sam^l. Ketterman C.S.

To J. M. Campbell. Esqr.

S. G.

IN TESTIMONY that the above is a copy of the original remaining on file in
the Department of Internal Affairs of Pennsylvania, made
conformably to an Act of Assembly approved the 16th day of
February, 1833, I have hereunto set my Hand and caused
the Seal of said Department to be affixed at Harrisburg,
this tenth day of September 1907.

Henry Houck
Secretary of Internal Affairs.